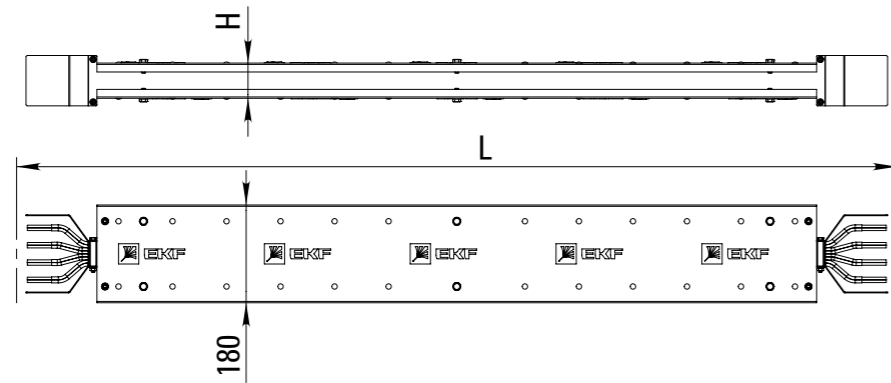
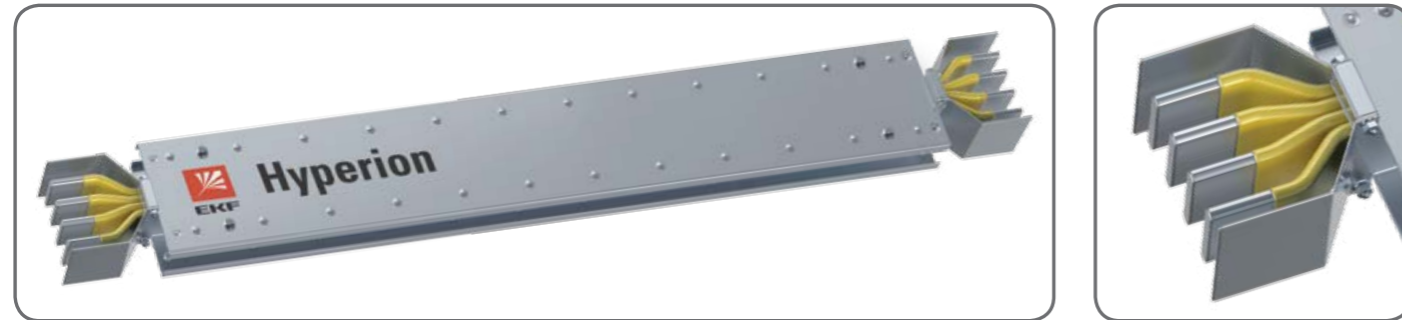


Прямая секция магистральная

Прямая магистральная секция трассы шинпровода предназначена для передачи и распределения электроэнергии.



Наименование	Тип	Номинальный ток, А	L, мм	H, мм	Артикул 3L+N+PE (кожух)	Артикул 3L+N+PE
Прямая секция	Стандартная секция	800	3000	64	HPA0800SS430	HPA0800SS530
		1000		84	HPA1000SS430	HPA1000SS530
		1250		104	HPA1250SS430	HPA1250SS530
		1600		120	HPA1600SS430	HPA1600SS530
		2000		164	HPA2000SS430	HPA2000SS530
		2500		204	HPA2500SS430	HPA2500SS530
		3200		284	HPA3200SS430	HPA3200SS530
		4000		324	HPA4000SS430	HPA4000SS530
	Нестандартная секция	800	499 - 1500	64	HPA0800SS41A	HPA0800SS51A
			1501 - 2000		HPA0800SS42B	HPA0800SS52B
			2001 - 2500		HPA0800SS42C	HPA0800SS52C
			2501 - 3000		HPA0800SS43D	HPA0800SS53D
		1000	499 - 1500	84	HPA1000SS41A	HPA1000SS51A
			1501 - 2000		HPA1000SS42B	HPA1000SS52B
			2001 - 2500		HPA1000SS42C	HPA1000SS52C
			2501 - 3000		HPA1000SS43D	HPA1000SS53D
		1250	499 - 1500	104	HPA1250SS41A	HPA1250SS51A
			1501 - 2000		HPA1250SS42B	HPA1250SS52B
			2001 - 2500		HPA1250SS42C	HPA1250SS52C
			2501 - 3000		HPA1250SS43D	HPA1250SS53D
		1600	499 - 1500	120	HPA1600SS41A	HPA1600SS51A
			1501 - 2000		HPA1600SS42B	HPA1600SS52B
			2001 - 2500		HPA1600SS42C	HPA1600SS52C
			2501 - 3000		HPA1600SS43D	HPA1600SS53D
		2000	499 - 1500	164	HPA2000SS41A	HPA2000SS51A
			1501 - 2000		HPA2000SS42B	HPA2000SS52B
			2001 - 2500		HPA2000SS42C	HPA2000SS52C
			2501 - 3000		HPA2000SS43D	HPA2000SS53D
		2500	499 - 1500	204	HPA2500SS41A	HPA2500SS51A
			1501 - 2000		HPA2500SS42B	HPA2500SS52B
			2001 - 2500		HPA2500SS42C	HPA2500SS52C
			2501 - 3000		HPA2500SS43D	HPA2500SS53D
3200	499 - 1500	284	HPA3200SS41A	HPA3200SS51A		
	1501 - 2000		HPA3200SS42B	HPA3200SS52B		
	2001 - 2500		HPA3200SS42C	HPA3200SS52C		
	2501 - 3000		HPA3200SS43D	HPA3200SS53D		
4000	499 - 1500	324	HPA4000SS41A	HPA4000SS51A		
	1501 - 2000		HPA4000SS42B	HPA4000SS52B		
	2001 - 2500		HPA4000SS42C	HPA4000SS52C		
	2501 - 3000		HPA4000SS43D	HPA4000SS53D		



EKF